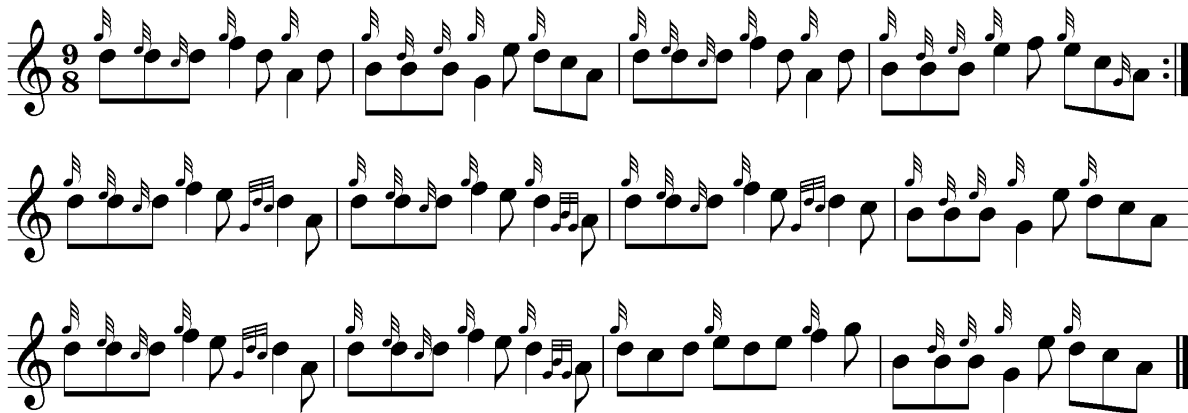


Crossing the Spital

Jig



Crossing the Spital: this came to me doing just that. The Spital is a high neck of land lying between Old and New Aberdeen, and I used it frequently walking home from the University. The idea of the tune was to use an ungapped scale which featured the C in places where it would normally be absent: the result should be a jaunty, “folksy” sort of feel.

The Doonmaist

Jig



The Doonmaist: the Upmaist and The Doonmaist are rocky pools near Fraserburgh where children can swim, although I am not sure at this distance in time that I could find them any more. The tunes are intended to be played together as the opening pair in a sequence which continues with “Crossing the Spital”, followed by “Craighall Crescent” and “Casavisocchi”.