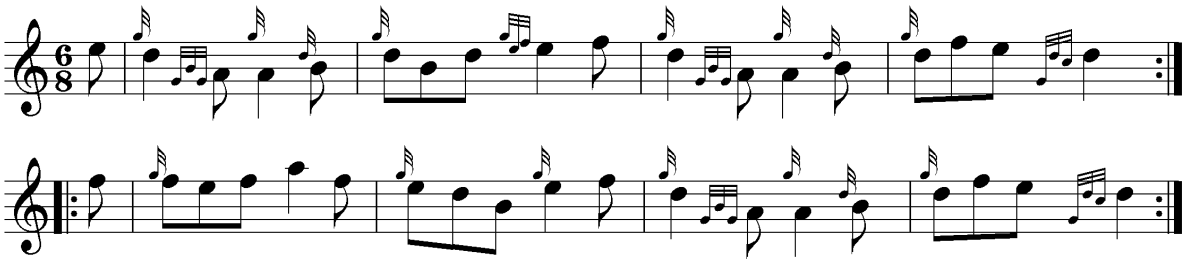


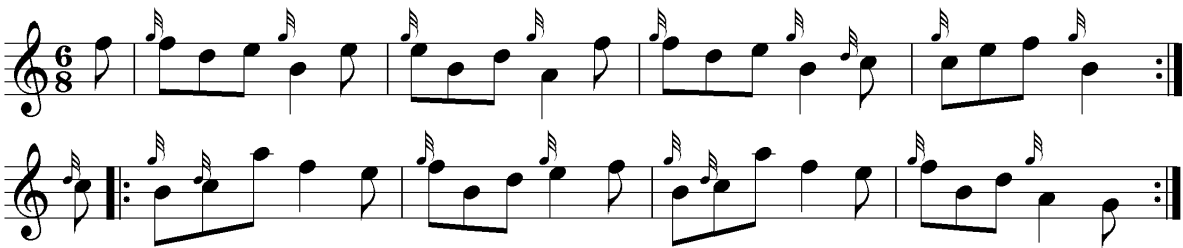
The Big Batha

Jig



The Little Batha

Jig



***The Big Batha*** and ***The Little Batha***: “The Big Batha” and “The Little Batha” are named for two bathing pools, an upper and a lower, amongst the rocks between Broadsea and Fraserburgh; they used to warm up on summer days at certain stages of the tide and made immersion in the North Sea a rather more bearable experience.



*Fraserburgh Lighthouse and Wine Tower*