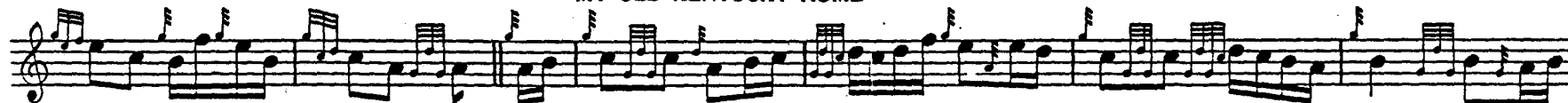


WESTERN MEDLEY *Dedicated to Stephen C. Foster, born 4th. July 1826. the Robt. Burns of America.*

J. D. R. W.



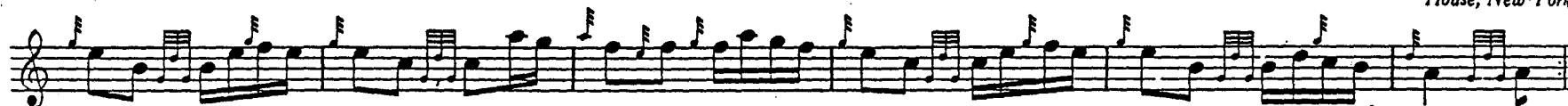
MY OLD KENTUCKY HOME



RED WING



*Strain by favour of Copyright owner, Richmond Mayer Music House, New York.*



NELLIE GRAY



GOLDEN ROD J. D. R. W.

Musical notation for 'GOLDEN ROD' in treble clef, 6/8 time. The piece features a series of eighth-note patterns with triplets indicated by a '3' over the notes.

UNDER THE WILLOW

Musical notation for 'UNDER THE WILLOW' in treble clef, 6/8 time. The melody consists of eighth notes and quarter notes.

MY MARYLAND

Musical notation for 'MY MARYLAND' in treble clef, 6/8 time. The melody is composed of eighth notes and quarter notes.

(Silent Drums here)

Musical notation for '(Silent Drums here)' in treble clef, 6/8 time. The notation shows a sequence of eighth notes and quarter notes, with a dashed line above the staff indicating the drum part is silent.

LOCHABER NO MORE Lament J. D. R. WATT  
Mode Style A. B. C. F.

21

Musical notation for 'LOCHABER NO MORE' in treble clef, 3/4 time. The piece is marked 'Lament' and includes the number '21' at the beginning of the staff.