

62

MISS JOHNSTON Reel (Traditional)

80

Musical notation for MISS JOHNSTON Reel (Traditional). It consists of three staves of music in treble clef, 2/4 time signature. The first staff starts with a treble clef and a common time signature 'C'. The music is a traditional reel with a mix of eighth and sixteenth notes.

LULLABY Retreat

81

Musical notation for LULLABY Retreat. It consists of three staves of music in treble clef, 2/4 time signature. The music is a lullaby with a slower tempo, featuring a mix of eighth and sixteenth notes.

SHENANIGAN March

ABCDEFGA By A.K.C

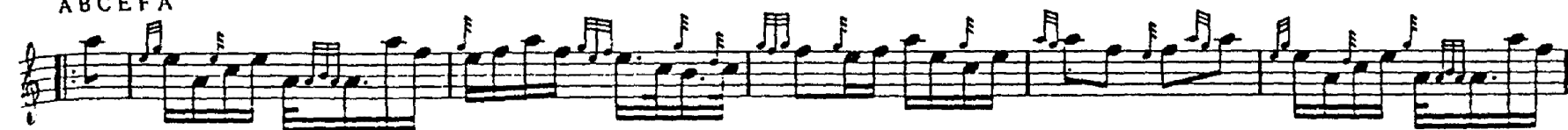
82

Musical notation for SHENANIGAN March. It consists of one staff of music in treble clef, 2/4 time signature. The music is a march with a mix of eighth and sixteenth notes. The notation includes a key signature change to one flat and a common time signature 'C'.

ABCDEFGA



ABCEFA



ABCEFGA

