

'S LEAM FEIN AN GLEANN.

THE GLEN IS MINE.

Composed by
John Mac Crimmon

Andante.



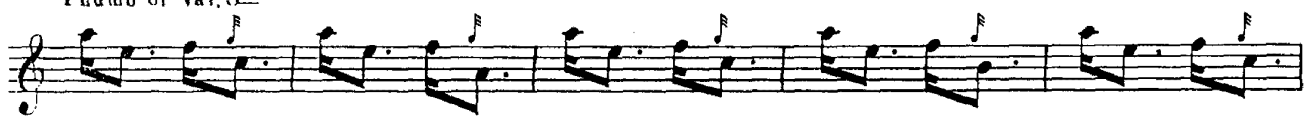
Thumb or Var. 1st



Thumb or Var. 2nd



Thumb or Var. 3rd



Var. 4th Round Movement.

Musical notation for the first variation, consisting of four staves of music. The notation is in treble clef with a 6/8 time signature. It features a complex, rhythmic melody with many eighth and sixteenth notes, and rests. The piece concludes with a double bar line.

Doubling of Var. 4th Round Movement.

Musical notation for the doubling of the first variation, consisting of four staves of music. The notation is in treble clef with a 6/8 time signature. It features a complex, rhythmic melody with many eighth and sixteenth notes, and rests. The piece concludes with a double bar line.

Var. 5th Taoirluath.

Musical notation for the fifth variation, consisting of three staves of music. The notation is in treble clef with a 6/8 time signature. It features a complex, rhythmic melody with many eighth and sixteenth notes, and rests. The piece concludes with a double bar line.

Doubling of Var. 5th Taorluath

Musical notation for the Doubling of Var. 5th Taorluath, consisting of four staves of music. The notation is in treble clef and features a complex, rhythmic melody with many sixteenth and thirty-second notes. The piece concludes with the instruction *D. C. Thema.*

Var. 6th Cruinluath.

Musical notation for Var. 6th Cruinluath, consisting of four staves of music. The notation is in treble clef and features a complex, rhythmic melody with many sixteenth and thirty-second notes.

Doubling of Cruinluath.

Musical notation for the Doubling of Cruinluath, consisting of four staves of music. The notation is in treble clef and features a complex, rhythmic melody with many sixteenth and thirty-second notes. The piece concludes with the instruction *D. C.*