

2 Jig. The Highway to Dublin.

3.

Musical notation for 'The Highway to Dublin', a jig. It consists of three staves of music in treble clef with a key signature of one sharp (F#). The first staff begins with a treble clef, a sharp sign, and a common time signature. The music is written in a rhythmic, dance-like style with many eighth and sixteenth notes. The second and third staves continue the melody.

Reel. Lady Doll Sinclair.

4.

Musical notation for 'Lady Doll Sinclair', a reel. It consists of three staves of music in treble clef with a key signature of one sharp (F#). The first staff begins with a treble clef, a sharp sign, and a common time signature. The music is written in a rhythmic, dance-like style with many eighth and sixteenth notes. The second and third staves continue the melody.

Jig. The Miller's Rant.

5.

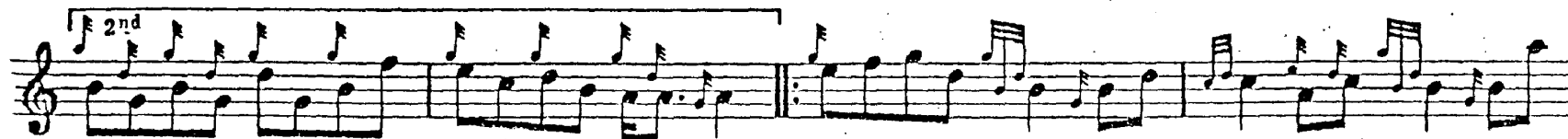
Musical notation for 'The Miller's Rant', a jig. It consists of two staves of music in treble clef with a key signature of one sharp (F#). The first staff begins with a treble clef, a sharp sign, and a common time signature. The music is written in a rhythmic, dance-like style with many eighth and sixteenth notes. The second staff continues the melody.



Quickstep. The M<sup>o</sup> Naughtons' March.



Reel. The Kind Old Man's Daughter.\*



\* Communicated by the late Donald M<sup>o</sup> Fedran of Glasgow.  
The Edinburgh Collection. Part I.