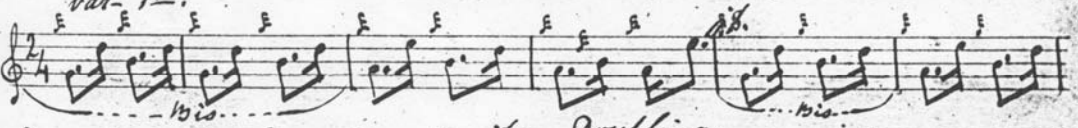
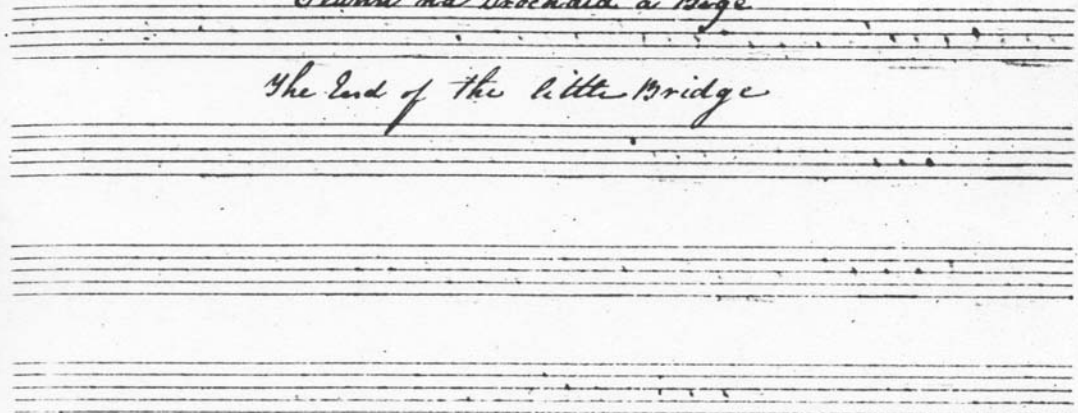


*Beann na Drochaid a Bidge*

*The End of the Little Bridge*



This page contains a handwritten musical score for a single melodic line, likely for a horn or trumpet. The score consists of 13 measures of music, each beginning with a treble clef and a key signature of one flat (B-flat). The notes are primarily eighth and sixteenth notes, often beamed together in groups. The score is annotated with various performance instructions:

- Measure 1: *Bis*
- Measure 2: *Bis*
- Measure 3: *Bis*
- Measure 4: *var 4<sup>th</sup>*
- Measure 5: *var 5<sup>th</sup>*
- Measure 6: *var 6<sup>th</sup>*
- Measure 7: *Cromlech 1<sup>st</sup>*
- Measure 8: *Cromlech 2<sup>nd</sup>*
- Measure 9: *Cromlech 3<sup>rd</sup>*
- Measure 10: *Cromlech 4<sup>th</sup>*
- Measure 11: *Cromlech 5<sup>th</sup>*
- Measure 12: *Cromlech 6<sup>th</sup>*
- Measure 13: *Thema, all fine.*

Repetitive markings such as *Bis* and *4 times* are placed below the notes in several measures, indicating repeated performance of the preceding note or phrase. The notation includes slurs, accents, and dynamic markings like *ff* (fortissimo) and *sfz* (sforzando).