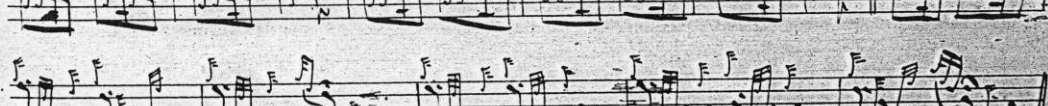
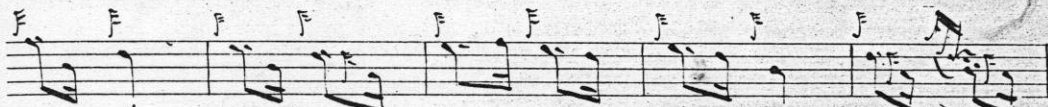


"Own Variations". Mackays & best Moris being Youngyrot's
336
Sir Owen Cameron of Lochiel's Salute (Away to your tube Owen)

Airlan



Cont. ver.

Doubling of Saw-Cuth

Handwritten musical notation for the first section, 'Doubling of Saw-Cuth'. It consists of three staves of music. The notation is dense, featuring many beamed notes and rests, characteristic of a fast-paced instrumental piece. The first staff begins with a treble clef and a key signature of one flat. The music is written in a style typical of 18th or 19th-century manuscript notation.

Grin. Lyath.

Handwritten musical notation for the second section, 'Grin. Lyath.'. It consists of three staves of music. The notation is dense, featuring many beamed notes and rests, characteristic of a fast-paced instrumental piece. The first staff begins with a treble clef and a key signature of one flat. The music is written in a style typical of 18th or 19th-century manuscript notation.

Doubling.

Handwritten musical notation for the third section, 'Doubling.'. It consists of four staves of music. The notation is dense, featuring many beamed notes and rests, characteristic of a fast-paced instrumental piece. The first staff begins with a treble clef and a key signature of one flat. The music is written in a style typical of 18th or 19th-century manuscript notation.

Four empty musical staves at the bottom of the page, consisting of five-line systems.