

408.

Faillte Sain'te Longhair

1908

by P. J. O'Regan

*Uilleann*

1914

Handwritten musical notation for the Uilleann section, consisting of three staves of music in treble clef with a key signature of one sharp (F#).

*Dublachadh*

Handwritten musical notation for the Dublachadh section, consisting of three staves of music in treble clef with a key signature of one sharp (F#).

*Suibhéal*

Handwritten musical notation for the Suibhéal section, consisting of two staves of music in treble clef with a key signature of one sharp (F#).

*Doubling*

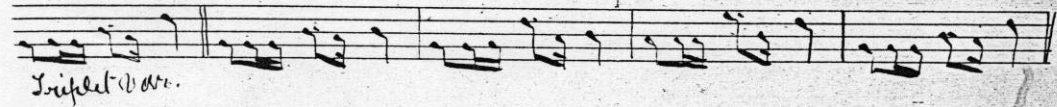
Handwritten musical notation for the Doubling section, consisting of two staves of music in treble clef with a key signature of one sharp (F#).

Handwritten musical notation for a section with a double bar line, consisting of two staves of music in treble clef with a key signature of one sharp (F#).

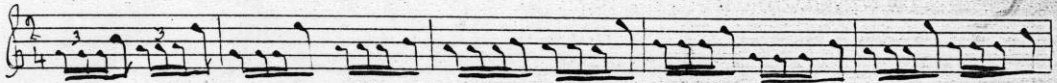
*Var 2nd*

Handwritten musical notation for the Var 2nd section, consisting of two staves of music in treble clef with a key signature of one sharp (F#).

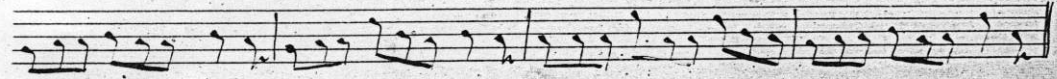
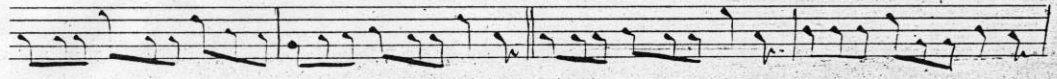
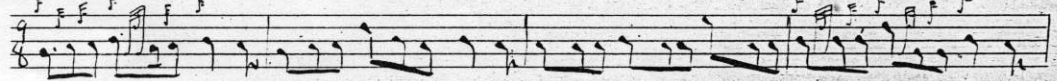
*A very plain cut*



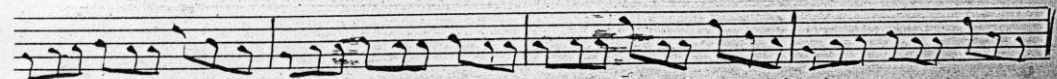
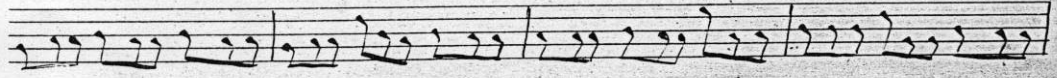
*Triplet* *Or.*



*Lox-leath.*



*Doubling*



410.

*Al. March*

*Al. March*

*Al. March*

*Al. March*

*Al. March*

*Crin. Waltz*

*Crin. Waltz*

*Crin. Waltz*

*Crin. Waltz*

*Crin. Waltz*

*Crin. Waltz*

*Crin. Waltz*

*Double Crin. Waltz*

*Double Crin. Waltz*





*Al. Mark*

