

210

MISS VICTORIA ROSS, STRATHSPEY.

305

Musical notation for 'MISS VICTORIA ROSS, STRATHSPEY.' in C major, 2/4 time. The piece consists of three staves. The first staff begins with a treble clef and a common time signature. The second staff is marked '1st time.' and the third staff is marked '2nd time.' Both the second and third staves feature a triplet of eighth notes.

THE CHARMS OF WHISKEY. REEL.

306

Musical notation for 'THE CHARMS OF WHISKEY. REEL.' in C major, 2/4 time. The piece consists of three staves. The first staff begins with a treble clef and a common time signature. The second staff is marked '1st time.' and the third staff is marked '2nd time.' Both the second and third staves feature a triplet of eighth notes.

ALEX<sup>R</sup> GLEN MARCH.

By D. CAMPBELL.

307

Musical notation for 'ALEX<sup>R</sup> GLEN MARCH.' in G major, 2/4 time. The piece consists of four staves. The first staff begins with a treble clef and a 2/4 time signature. The music is a continuous march with a strong rhythmic pattern.

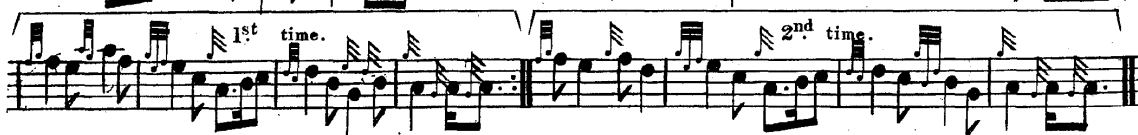
KEITH STUART M<sup>C</sup> KENZIE'S MARCH.

308

Musical notation for 'KEITH STUART M<sup>C</sup> KENZIE'S MARCH.' in G major, 6/8 time. The piece consists of two staves. The first staff begins with a treble clef and a 6/8 time signature. The music is a continuous march with a strong rhythmic pattern.



THE SWEET MAID OF GLENDARUAIL. MARCH.



HIGHLAND KITTIE. JIG.



THE HILLS OF GLENTUIM. MARCH. By W. M<sup>c</sup> DONALD.

