

158

M^o GREGOR'S LAMENT.

Very Slow.

312

Musical notation for M^o Gregor's Lament, measures 312-315. The piece is in 4/4 time and begins with a treble clef. The melody is characterized by a slow, descending line with frequent grace notes and slurs, creating a somber and plaintive mood.

MISS LUCY CAMPBELL'S SHATHSPEP.

313

Musical notation for Miss Lucy Campbell's Shathspep, measures 313-316. The piece is in 4/4 time and begins with a treble clef. The melody is a lively, rhythmic tune with a mix of eighth and sixteenth notes, typical of a Scottish shathspep.

MURRAY'S DREAM.. MARCH.

314

Musical notation for Murray's Dream.. March, measures 314-317. The piece is in 6/8 time and begins with a treble clef. The melody is a rhythmic march with a strong, steady pulse, featuring a mix of eighth and sixteenth notes.

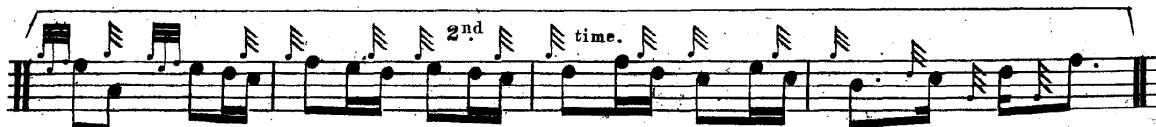
THE ARGYLLSHIRE VOLUNTEERS' MARCH.

315

Musical notation for The Argyllshire Volunteers' March, measures 315-318. The piece is in 4/4 time and begins with a treble clef. The melody is a rhythmic march with a strong, steady pulse, featuring a mix of eighth and sixteenth notes.



SANDY KING. MARCH.



AN OLD HIGHLAND AIR. MARCH.

