

*Lumha Chaillean Ruaidh*

*na*

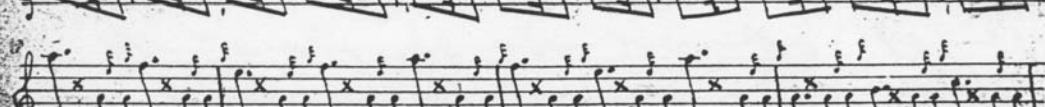
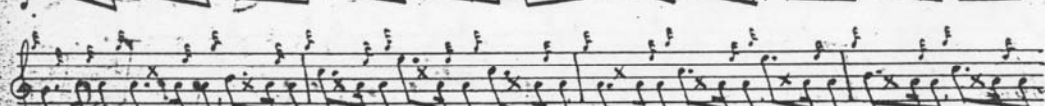
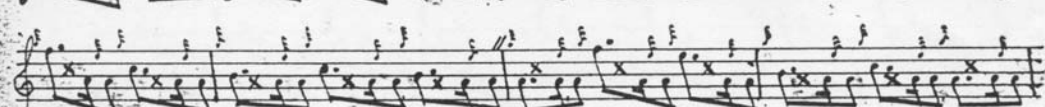
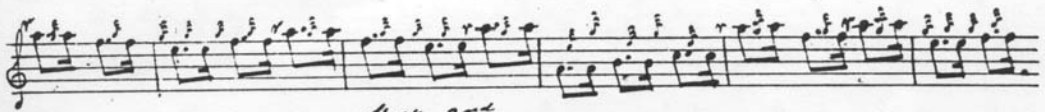
*Lumha Mhic Coinnich.*

69

*Collins Pray*

*Solus Roy Mac Kenzie's Lament.*

*Note: The variations played by my father to this Thoma are found in the same no. in the original MS. (which see p. 33) Long party.*



Correspond with it; In the year 1840 while on a visit to him at Kyleshaugh I composed these variations of which he highly approved. Mark

A handwritten musical score consisting of 12 staves. The notation is dense, featuring many beamed notes and rests. The first staff ends with a double bar line. The sixth staff has the word "Doubling" written above it. The final staff concludes with the signature "P. C. Thomas".